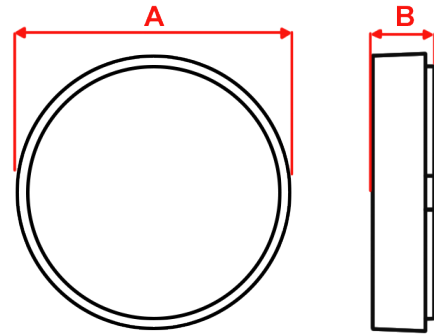
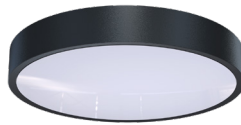
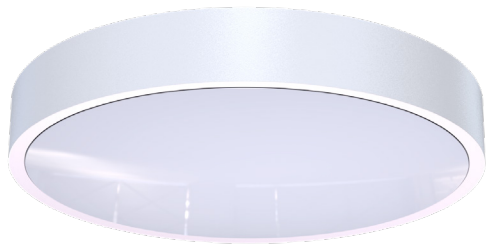


Galaxy 2

Circular LED Emergency Bulkhead



2250 Lumens	18 Watts	3000K/ 4000K	Ceiling and Wall Mounting
LiFePO4 Battery	Class II	IP 65	8Y Warranty

Order Code	GC2M3/LED
Mode of operation	Maintained
Emergency duration	3 Hour
Input voltage	220-240V 50/60Hz
Battery type	6.4V 1.5Ah LiFePO4
Battery low voltage cut off	5 VDC
Battery discharge current @ 6.4V DC	0.33A
Lamp	LED
Lamp colour	4000K
Lamp lumen level in Mains	2250lm
Lamp Lifetime	L ₈₀ B ₅₀ 50000Hrs
Lamp lumen level in emergency	200lm
Ingress Protection	IP65
Impact Resistance	IK10
Cable entry	20mm on sides and rear of product
Luminaire class	Class II
Product Weight	1.4Kg
Packaging Weight	0.2Kg
Standards	EN61347-2-7, EN61347-2-13, EN 60598-2-22, EN 55015
Environment	0°C to 40°C up to 80% relative humidity

Materials

Housing: Polycarbonate

Standard Colour: White - RAL 9003
Alternative Colours: Black - RAL 9005
Add /BL to Order Code

Alternative Colours Available Upon Request

Warranty

Standard Warranty: 8 Years
Alternative Warranty: 10 Years
Add /10 Years to Order Code

System	Order Code	Mode of Operation	Battery	Battery P/N	Lumens (Mains)	Lumens (Emergency)	Dimensions (mm)	
							A	B
Standalone	GC2M3/LED	Maintained	6.4V 1.5Ah LiFePO4	70159	2250	200	352	67.5
Alternative Systems Available: Specification Sheets Available Upon Request								
Mains	GC2/LED/230	Mains	-	-	2250	-	352	67.5
Central Battery	GC2/LED/230S	Slave	-	-	2250	-	352	67.5
DALI Wireless	GC2M3/LED/DAW	Maintained	6.4V 6.4Ah LiFePO4	70258	2250	630	352	67.5
Dual DALI	GC2M3/LED/DADA	Dual Mains & Maintained DALI	6.4V 6.4Ah LiFePO4	70258	2250	630	352	67.5

Photometrics

Mounting Height	Lighting level directly under Luminaire (Lux)	Luminaire Spacing (Metres)			
		Escape Route		Open Plan	
		1.0lx	1.0lx	0.5lx	0.5lx
2m	12.16	3.1	7.7	3.2	8.0
2.5m	7.78	3.2	8.3	3.4	8.9
3m	5.40	3.3	8.8	3.6	9.6
4m	3.04	3.3	9.4	3.8	10.9
6m	1.35	2.3	9.3	3.1	12.4
8m	0.76	-	7.5	-	13.2
10m	0.49	-	-	-	13.6

