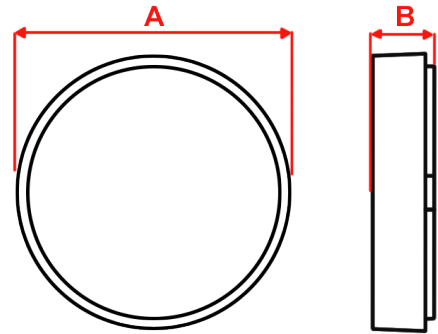
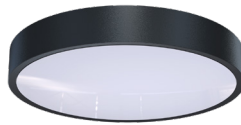
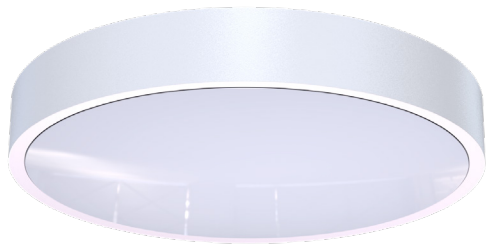


Galaxy 2

Circular LED Emergency Bulkhead



| | | | |
|-----------------------|--------------------|-------------------------|------------------------------------|
| 2250 Lumens | 18 Watts | 3000K/ 4000K | Ceiling and Wall Mounting |
| LiFePO4 Battery | Class II | IP 65 | 8Y Warranty |

| | |
|-------------------------------------|---|
| Order Code | GC2M3/LED |
| Mode of operation | Maintained |
| Emergency duration | 3 Hour |
| Input voltage | 220-240V 50/60Hz |
| Battery type | 6.4V 1.5Ah LiFePO4 |
| Battery low voltage cut off | 5 VDC |
| Battery discharge current @ 6.4V DC | 0.33A |
| Lamp | LED |
| Lamp colour | 4000K |
| Lamp lumen level in Mains | 2250lm |
| Lamp Lifetime | L ₈₀ B ₅₀ 50000Hrs |
| Lamp lumen level in emergency | 200lm |
| Ingress Protection | IP65 |
| Impact Resistance | IK10 |
| Cable entry | 20mm on sides and rear of product |
| Luminaire class | Class II |
| Product Weight | 1.4Kg |
| Packaging Weight | 0.2Kg |
| Standards | EN61347-2-7, EN61347-2-13, EN 60598-2-22, EN 55015 |
| Environment | 0°C to 40°C up to 80% relative humidity |

Materials

Housing: Polycarbonate

Standard Colour: White - RAL 9003
Alternative Colours: Black - RAL 9005
Add /BL to Order Code

Alternative Colours Available Upon Request

Warranty

Standard Warranty: 8 Years
Alternative Warranty: 10 Years
Add /10 Years to Order Code

| System | Order Code | Mode of Operation | Battery | Battery P/N | Lumens (Mains) | Lumens (Emergency) | Dimensions (mm) | |
|--|----------------|------------------------------|--------------------|-------------|----------------|--------------------|-----------------|------|
| | | | | | | | A | B |
| Standalone | GC2M3/LED | Maintained | 6.4V 1.5Ah LiFePO4 | 70271 | 2250 | 200 | 352 | 67.5 |
| Alternative Systems Available: Specification Sheets Available Upon Request | | | | | | | | |
| Mains | GC2/LED/230 | Mains | - | - | 2250 | - | 352 | 67.5 |
| Central Battery | GC2/LED/230S | Slave | - | - | 2250 | - | 352 | 67.5 |
| DALI Wireless | GC2M3/LED/DAW | Maintained | 6.4V 6.4Ah LiFePO4 | 70258 | 2250 | 630 | 352 | 67.5 |
| Dual DALI | GC2M3/LED/DADA | Dual Mains & Maintained DALI | 6.4V 6.4Ah LiFePO4 | 70258 | 2250 | 630 | 352 | 67.5 |

Photometrics

| Mounting Height | Lighting level directly under Luminaire (Lux) | Luminaire Spacing (Metres) | | | |
|-----------------|---|----------------------------|-------|-----------|-------|
| | | Escape Route | | Open Plan | |
| | | 1.0lx | 1.0lx | 0.5lx | 0.5lx |
| 2m | 12.16 | 3.1 | 7.7 | 3.2 | 8.0 |
| 2.5m | 7.78 | 3.2 | 8.3 | 3.4 | 8.9 |
| 3m | 5.40 | 3.3 | 8.8 | 3.6 | 9.6 |
| 4m | 3.04 | 3.3 | 9.4 | 3.8 | 10.9 |
| 6m | 1.35 | 2.3 | 9.3 | 3.1 | 12.4 |
| 8m | 0.76 | - | 7.5 | - | 13.2 |
| 10m | 0.49 | - | - | - | 13.6 |

