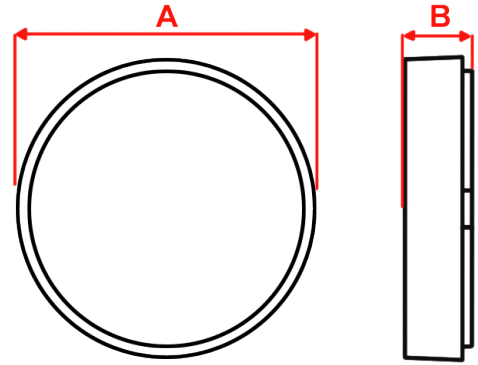
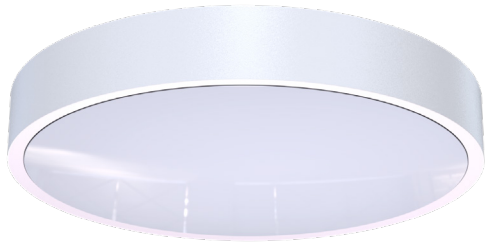


# Galaxy 2

## Circular LED Mains Bulkhead



<b>2250</b> Lumens	<b>18</b> Watts	<b>3000K/ 4000K</b>	Ceiling and Wall Mounting
<b>LED</b>	Class II	<b>IP 65</b>	<b>8Y</b> Warranty

Order Code	<b>GC2/LED/230</b>
Mode of operation	Mains
Input voltage	220-240V 50/60Hz
Lamp	LED
Lamp colour	4000K
Lamp lumen level in Mains	2250lm
Lamp Lifetime	L <sub>80</sub> B <sub>50</sub> 50000Hrs
Ingress Protection	IP65
Impact Resistance	IK10
Cable entry	20mm on rear of product
Luminaire class	Class II
Product Weight	1.2Kg
Packaging Weight	0.2Kg
Standards	EN61347-2-7, EN61347-2-13, EN 60598-2-22, EN 55015
Environment	0°C to 45°C up to 80% relative humidity

### Materials

Housing: Polycarbonate

Standard Colour: White - RAL 9003  
Alternative Colours: Black - RAL 9005  
Add /BL to Order Code

Alternative Colours Available Upon Request

### Warranty

Standard Warranty: 8 Years  
Alternative Warranty: 10 Years  
Add /10 Years to Order Code

System	Order Code	Mode of Operation	Battery	Battery P/N	Lumens (Mains)	Lumens (Emergency)	Dimensions (mm)	
							A	B
<b>Mains</b>	<b>GC2/LED/230</b>	<b>Mains</b>	-	-	<b>2250</b>	-	<b>352</b>	<b>67.5</b>
Alternative Systems Available: Specification Sheets Available Upon Request								
Standalone	GC2M3/LED	Maintained	6.4V 1.5Ah LiFePO4	70271	2250	200	352	67.5
Central Battery	GC2/LED/230S	Slave	-	-	2250	-	352	67.5
DALI	GC2M3/LED/DA	Maintained	6.4V 6.4Ah LiFePO4	70258	2250	630	352	67.5
DALI Wireless	GC2M3/LED/DAW	Maintained	6.4V 6.4Ah LiFePO4	70258	2250	630	352	67.5
Dual DALI	GC2M3/LED/DADA	Dual Mains & Maintained DALI	6.4V 6.4Ah LiFePO4	70258	2250	630	352	67.5

