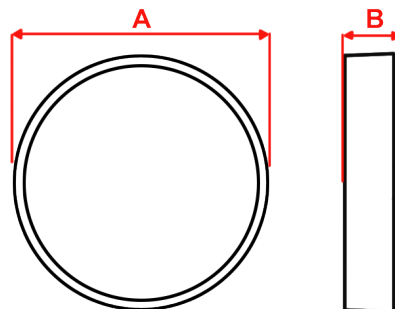
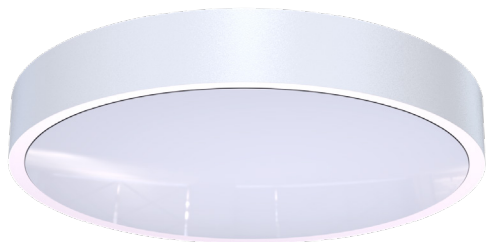


# Galaxy 2

Circular LED DALI Emergency Bulkhead



<b>2250</b> Mains Lumens	<b>630</b> Emergency Lumens	<b>3000K/4000K</b>	Ceiling and Wall Mounting
LiFePO4 Battery	Class II	<b>IP 65</b>	<b>8Y</b> Warranty

Order Code	<b>GC2M3/LED/DA</b>
Mode of operation	Maintained DALI
Emergency duration	3 Hour
Input voltage	220-240V 50/60Hz
Battery type	6.4V 6.4Ah LiFePO4
Battery low voltage cut off	5 VDC
Battery discharge current @ 6.4V DC	0.98A
Lamp	LED
Lamp colour	4000K
Lamp lumen level in Mains	2250lm
Lamp Lifetime	$L_{80 B_{50}}$ 50000Hrs
Lamp lumen level in emergency	630lm
Ingress Protection	IP65
Impact Resistance	IK10
Cable entry	20mm on sides and rear of product
Luminaire class	Class II
Product Weight	1.6Kg
Packaging Weight	0.2Kg
Standards	EN61347-2-7, EN61347-2-13, EN 60598-2-22, EN 55015
Environment	0°C to 40°C up to 80% relative humidity

## Materials

Housing: Polycarbonate

Standard Colour: White - RAL 9003  
Alternative Colours: Black - RAL 9005  
Add /BL to Order Code

Alternative Colours Available Upon Request

## Warranty

Standard Warranty: 8 Years  
Alternative Warranty: 10 Years  
Add /10 Years to Order Code

System	Order Code	Mode of Operation	Battery	Battery P/N	Lumens (Mains)	Lumens (Emergency)	Dimensions (mm)	
							A	B
<b>DALI</b>	<b>GC2M3/LED/DA</b>	<b>Maintained</b>	<b>6.4V 6.4Ah LiFePO4</b>	<b>70258</b>	<b>2250</b>	<b>630</b>	<b>352</b>	<b>67.5</b>
Alternative Systems Available: Specification Sheets Available Upon Request								
Standalone	GC2M3/LED	Maintained	6.4V 1.5Ah LiFePO4	70271	2250	200	352	67.5
Mains	GC2/LED/230	Mains	-	-	2250	-	352	67.5
Central Battery	GC2/LED/230S	Slave	-	-	2250	-	352	67.5
DALI Wireless	GC2M3/LED/DAW	Maintained	6.4V 6.4Ah LiFePO4	70258	2250	630	352	67.5
Dual DALI	GC2M3/LED/DADA	Dual Mains & Maintained DALI	6.4V 6.4Ah LiFePO4	70258	2250	630	352	67.5

## Photometrics

Mounting Height	Lighting level directly under Luminaire (Lux)	Luminaire Spacing (Metres)			
		Escape Route		Open Plan	
		1.0lx	1.0lx	0.5lx	0.5lx
<b>2m</b>	<b>12.16</b>	4.4	10.7	4.3	11.0
<b>2.5m</b>	<b>7.78</b>	4.8	11.8	4.7	12.2
<b>3m</b>	<b>5.40</b>	5.1	12.7	5.0	13.2
<b>4m</b>	<b>3.04</b>	5.6	14.2	5.5	15.1
<b>6m</b>	<b>1.35</b>	6.0	16.0	6.2	18.0
<b>8m</b>	<b>0.76</b>	5.7	16.8	6.5	20.1
<b>10m</b>	<b>0.49</b>	4.7	16.8	6.4	21.7

