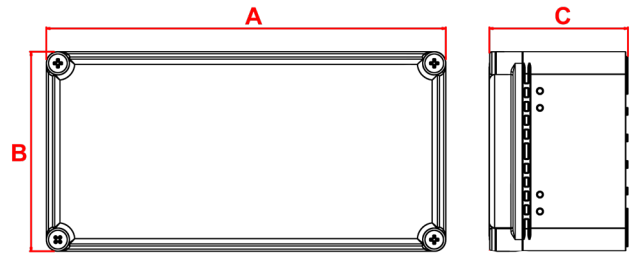
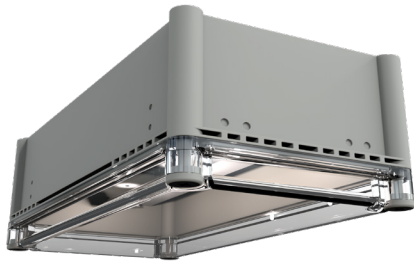


SKYLUX IP67

9W Emergency Bulkhead



Order Code	ZSKNM3LED9WIP67
Mode of operation	Non-Maintained
Emergency duration	3 Hours
Input voltage	220-240V AC
Power consumption	6VA
Battery type	9.6V 4.5Ah NiCd
Battery low voltage cut off	8V
Battery discharge current @ 9.6V DC	1A
Lamp	30x0.3W CREE medium power LED's
Lamp colour	6500k
Lamp lumen level in emergency	1300
Nominal lamp voltage	17.5V
Nominal lamp current	0.47A
Nominal lamp power	9 Watts
Maximum output voltage with no lamp connected	U-OUT=22V DC
Ingress Protection	IP67
Impact Resistance	IK10
Cable entry	To be Drilled and Glanded on installation (Glands not included)
Luminaire class	Class I
Product Weight	2.63 Kg
Packaging Weight	0.24Kg
Standards	EN61347-2-7, EN 60598-2-22, EN 55015
Environment	0°C to 45°C up to 80% relative humidity

Materials

Housing: Polycarbonate (Base)
Clear Polycarbonate (Diffuser)

Geartray: Painted sheet steel

Standard Colour: Grey
Alternative Colours: Available on request

Warranty

Standard Warranty: 6 Years
Alternative Warranty: 10 Years
Add **/10Y** to order code

System	Order Code	Mode of Operation	Battery	Battery P/N	Lumens (Emergency)	Dimensions (mm)		
						A	B	C
Standalone	ZSKNM3LED9WIP67	Non-Maintained	9.6V 4.5Ah NiCd	70247	1300	379	189	132
Alternative Systems Available:								
DALI	ZSKNM3L10WIP67DA	Non-Maintained	9.6V 6.4Ah LiFePO4	70255	1400	379	189	132
Self-Test	ZSKNM3L10WIP67ST	Non-Maintained	9.6V 6.4Ah LiFePO4	70255	1400	379	189	132
Central Battery	ZSKL9W230SIP67	Slave	n/a	n/a	1300	379	189	132

Photometrics

Mounting Height	Lighting level directly under Luminaire	↔		↔		↔		↔		↔	
		0.5	1.0	0.5	1.0	0.5	1.0	0.5	1.0	0.5	1.0
2m	52.64	13.7	11.3	32.8	27.4	30.7	25.4	28.7	23.5	11.7	9.7
2.5m	33.71	15.2	12.5	36.5	30.3	34.0	28.1	31.5	25.9	13.0	10.7
3m	23.42	16.5	13.4	39.8	32.9	36.9	30.6	34.0	28.2	14.1	11.5
4m	17.21	17.6	14.3	43.3	35.1	39.4	32.7	36.5	30.2	15.1	12.1
6m	13.18	18.6	15.0	46.5	37.1	41.8	34.5	38.8	31.9	15.9	11.5
8m	10.42	19.5	15.7	49.5	38.9	44.0	36.1	40.9	33.3	16.7	12.1
10m	8.44	20.3	15.2	52.1	40.5	45.8	37.4	42.9	34.4	17.2	12.7

