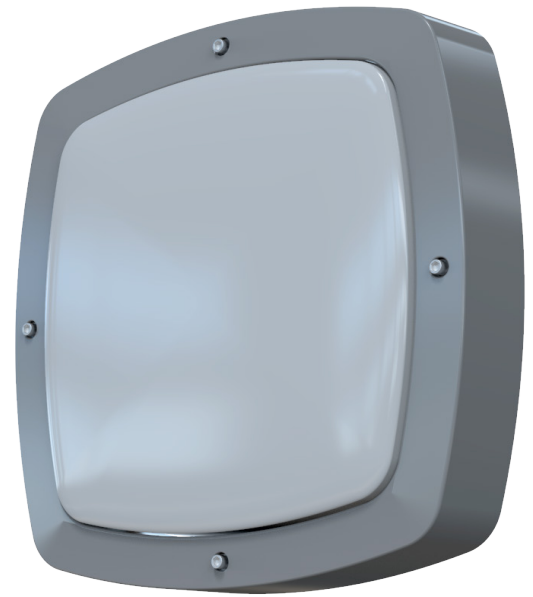


# NOVA SQUARE

PREMIUM RANGE

## Product Features

- 54 high output SAMSUNG white LEDs.
- Lamp colour - 3500K warm white.
- 300 lumens in emergency.
- 1080 lumens in mains.
- Competitively priced, high powered square LED bulkhead.
- Easy to install and maintain.
- Flame retardant polycarbonate opal diffuser.
- Vandal resistant screws.
- IP65 as standard.
- *For 5000K cool white lamp - contact Ventilux.*



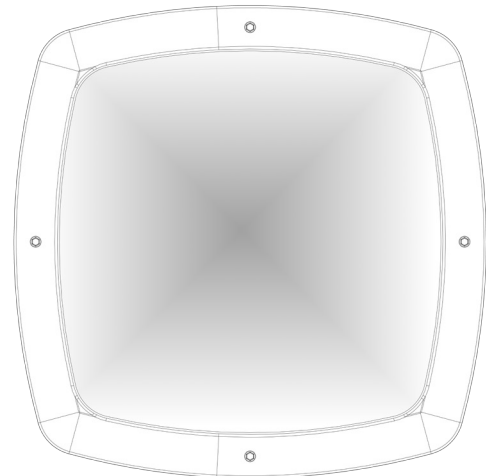
## Materials

- Housing - cast aluminium.
- Diffuser - flame retardant polycarbonate plastic.
- Batteries (self-contained) - 4.8V 4.5A/h Ni-Cd.
- Ni-Mh available upon request.


\*Equipment dimensions may vary with different systems.

## Installation notes

- Suitable for wall and ceiling mounting.
- Cable entry on rear of unit.
- Dimensions - See diagram.
- Weight: 4Kg.
- Temperature: 0°C - 45°C.



## Standard colour:

 Grey - RAL 7040 - add /GY to order code

## Alternative colour:

 Black - RAL 9017 - add /BL to order code

Other RAL colours available upon request

## System Mode

- Self contained. Non-Maintained 3 hour
- Self contained. Maintained 3 hour

## Part Number

- ZNSNM3LED
- NSM3/LED
- EYELID 1 option - add /EY1 to part number.*
- EYELID 2 option - add /EY2 to part number.*
- GUARD option - add /GU to part number.*

**Premium Range products carry 6 years warranty as standard.**

Alternative **Warranty** option

**10 Years** Add /10Y to Part Number

For Warranty Terms please visit the Ventilux website

Also available



**Eyelid 1 option**



**Eyelid 2 option**



**Guard option**

This specification sheet is a generic specification sheet. Specific specification sheets for Central Battery, Addressable Testing Systems etc are available from Ventilux upon request.