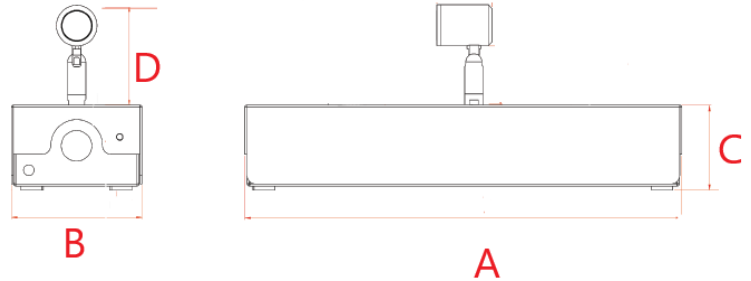
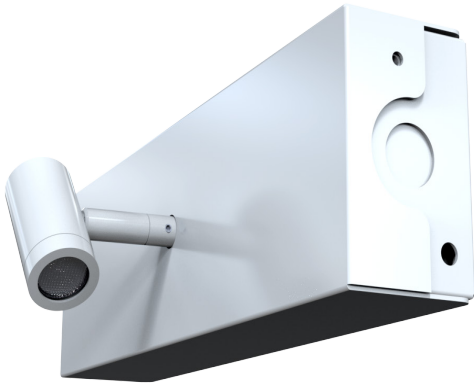


I-Lux

Spotlight- Surface Mounted



180 Lumens	3 Watts	6000K	Wall and Ceiling Mounting
Ni-MH Battery	Class I	IP 40	8Y Warranty

Order Code	ZILUNM3WLSM*
Mode of operation	Non-maintained
Emergency duration	3 hours
Input voltage	230/240V (207Vac - 264Vac) 50/60Hz
Power consumption	3.5VA, I _{nom} = 15mA
Battery type	Rechargeable Ni-MH 4.8V 4.5Ah
Battery low voltage cut off	4.0Vdc
Battery discharge current @ 4.8VDC	0.59A
Lamp	3W
Lamp colour	6000K
Lamp lumen level in emergency	180lm
Nominal lamp current	I _{rated} = 0.65A
Nominal lamp power	P _{rated} = 3W
Maximum output voltage with no lamp connected	U-OUT = 7.0Vdc
Ingress protection	IP40
Luminaire class	Class I
Weight	1.2Kg
Packaging Weight	0.2kg
Standards	EN61347-2-7, EN61347-2-13, EN 60598-2-22
Environment	0°C to 45°C up to 80% relative humidity

Materials

Housing: Die-Cast Aluminium
 Remote Pack: Powder coated Steel

Colours: *White - RAL 9016
 Add **WH** to Order Code
 -Black- Add **BL** to Order Code
 -Brushed Chrome- Add **BCH** to Order code
 Alternative Colours Available Upon Request

Warranty

Standard Warranty: 8 Years
 Alternative Warranty: 10 Years
 Add /10 Years to Order Code

System	Order Code	Mode of Operation	Battery	Battery P/N	Lumens (Emergency)	Dimensions (mm)			
						A	B	C	D
Standalone	ZILUNM3WLSM*	Non-Maintained	4.8V, 4.5Ah Ni-MH	70233	180	264	85	48	57
Alternative Systems Available: Specification Sheets Available Upon Request									
Central Battery	ZILU3W230SSM*	Slave	-	-	180	264	85	48	57
DALI	ZILUNM3LSMDAL*	Non-Maintained	6V, 4.5Ah Ni-MH	70154	260	264	85	48	57