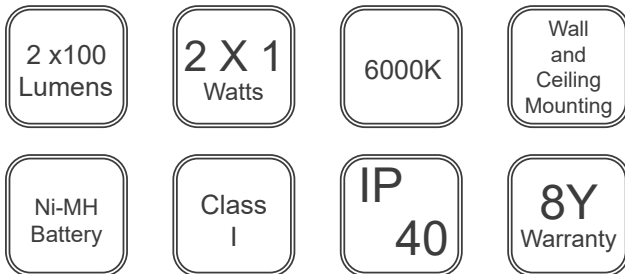
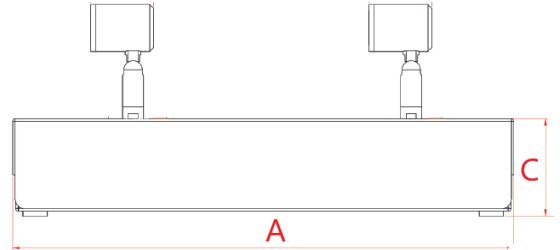
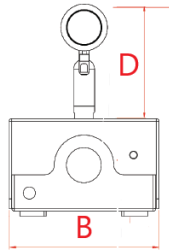
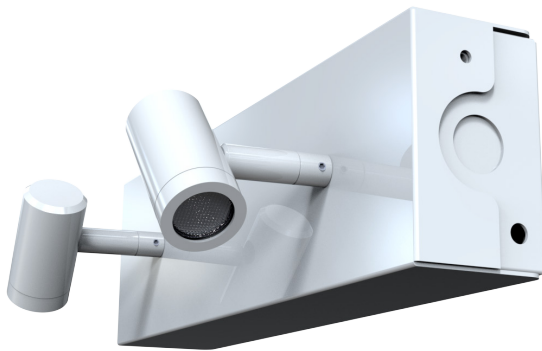


# I-Lux Dual SM

## Dual Spotlight- Surface Mounted



Order Code	ILNM3/2TL/SM*
Mode of operation	Non-maintained
Emergency duration	3 hours
Input voltage	230/240V (207Vac - 264Vac) 50/60Hz
Power consumption	3.5VA, I <sub>nom</sub> = 15mA
Battery type	Rechargeable Ni-MH 4.8V 4.5Ah
Battery low voltage cut off	4.0Vdc
Battery discharge current @ 4.8VDC	0.5A
Lamp	2 x 3W
Lamp colour	6000K
Lamp lumen level in emergency	2 x 100 lm
Nominal lamp current	I <sub>rated</sub> = 0.35A
Nominal lamp power	P <sub>rated</sub> = 2x1W
Maximum output voltage with no lamp connected	U-OUT = 13.5Vdc
Ingress protection	IP40
Luminaire class	Class I
Weight	1.2Kg
Packaging Weight	0.2kg
Standards	EN61347-2-7, EN61347-2-13, EN 60598-2-22
Environment	0°C to 45°C up to 80% relative humidity

## Materials

Lamp Heads: Die-Cast Aluminium  
Housing: Painted Steel

Colours: Chrome  
\*White - RAL 9016  
Add **WH** to Order Code  
-Black- Add **BL** to Order Code  
-Brushed Chrome- Add **BCH** to Order code  
Alternative Colours Available Upon Request

## Warranty

Standard Warranty: 8 Years  
Alternative Warranty: 10 Years  
Add /10 Years to Order Code

System	Order Code	Mode of Operation	Battery	Battery P/N	Lumens (Emergency)	Dimensions (mm)			
						A	B	C	D
Standalone	ILNM3/2TL/SM*	Non-Maintained	4.8V, 4.5Ah Ni-MH	70233	2 x 100	264	85	48	57
Alternative Systems Available: Specification Sheets Available Upon Request									
Central Battery	ZILU2XTL230S*	Slave	-	-	2 x 100	264	85	48	57