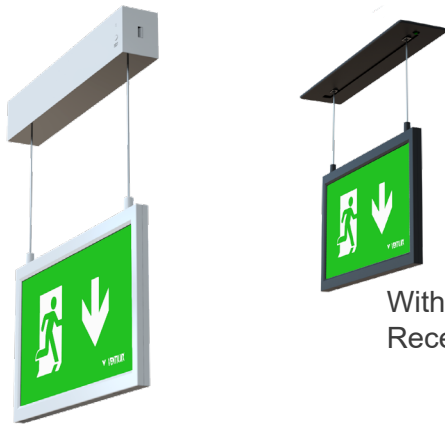
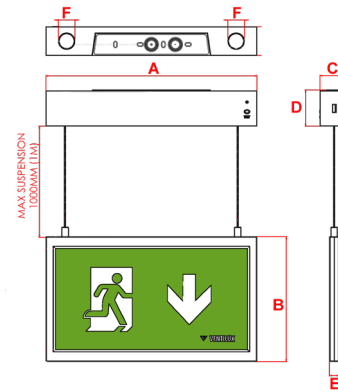


# Atlantic SP Gen 2

## Suspended Self-Test Exit Sign



With Additional  
Recessing Kit



<b>30m</b> Viewing Distance	<b>IP</b> <b>40</b>	<b>LiFePO4</b> Battery	<b>Wall and</b> <b>Ceiling</b> Mounting
 <b>1.4Kg</b>	<b>5700K</b>	<b>Class</b> <b>II</b>	<b>8Y</b> Warranty

Order Code	<b>ATSP2M3/LED/ST</b>
Mode of operation	Maintained Self-Test
DALI Interface	For Controlled Monitoring and Reporting
Emergency duration	3 hours
Input voltage	230/240V (207VAC - 264VAC) 50/60Hz
Power consumption	4.5VA, I <sub>nom</sub> = 19mA (Full Battery)
Battery type	Rechargeable LiFePO4 Battery 3.2V 3.2Ah
Battery discharge current @ 3.2V DC	0.43A
Lamp	1 watt LED Strip
Lamp colour	5700K
Lamp Life	L <sub>80</sub> B <sub>50</sub> 80000 Hours
Viewing Distance	30m
Nominal lamp voltage	V <sub>rated</sub> = 3V DC
Nominal lamp current	I <sub>rated</sub> = 0.35A CC
Nominal lamp power	P <sub>rated</sub> = 1W
Maximum output voltage with no lamp connected	U-OUT = 5V DC
Ingress Protection	IP40
Cable entry	20mm on top and rear of product
Luminaire class	Class II
Product Weight	1.4Kg
Packaging Weight	0.15Kg
Standards	EN61347-2-7, EN61347-2-13, EN 60598-2-22, EN 55015
Environment	0°C to 45°C up to 80% relative humidity.

## Materials

Housing: ABS  
 Decal Legend: Polypropylene  
 Standard Colour: White - RAL 9016  
 Alternative Colour: Black - RAL 9017  
 Add /BL to order code

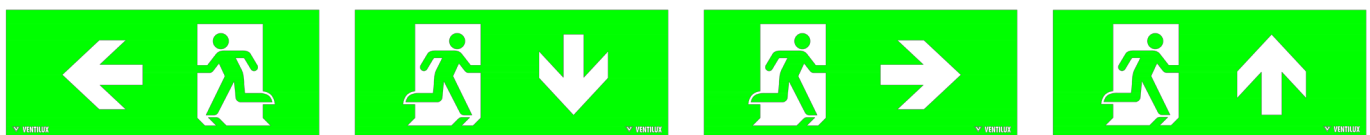
## Warranty

Standard Warranty: 8 Years  
 Alternative Warranty: 10 Years  
 Add /10Y to order code

System	Order Code	Mode of Operation	Battery	Battery P/N	Viewing Distance	Dimensions (mm)					
						A	B	C	D	E	F
Self-Test	ATSP2M3/LED/ST	Maintained	LiFePO4 3.2V, 3.2Ah	70261	30	330	195	45	56.5	15	26
Alternative Systems Available: Specification sheets available upon request											
Standalone	ATSP2M3/LED	Maintained	LiFePO4 6.4V, 0.6Ah	70270	30	330	195	45	56.5	15	26
DALI	ATSP2M3/LED/DA	Maintained	LiFePO4 3.2V, 3.2Ah	70261	30	330	195	45	56.5	15	26
DALI Wireless	ATSPM3/LED/DAW	Maintained	LiFePO4 3.2V, 3.2Ah	70261	30	330	195	60	80	15	26
Self-Test	ATSP2M3/LED/ST	Maintained	LiFePO4 3.2V, 3.2Ah	70261	30	330	195	45	56.5	15	26

Available Accessories					
Order Code	Description	Material	Cutout (mm)	Dimensions(mm)	
AT/RK	Recessing Kit	ABS	370 x 55	390	80

## Included Legends



ISO 01

ISO 02

ISO 03

ISO 04