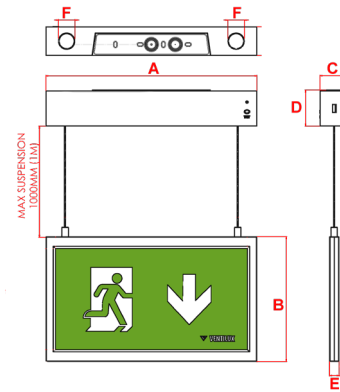


Atlantic SP

Suspended Exit Sign DALI Wireless



30m Viewing Distance	IP 40	LiFePO4 Battery	Wall and Ceiling Mounting
1.2Kg	5700K	Class II	8Y Warranty

Materials

Housing: ABS
 Decal Legend: Polypropylene

Standard Colour: White - RAL 9016
 Alternative Colours Available Upon Request

Warranty

Standard Warranty: 8 Years
 Alternative Warranty: 10 Years
 Add /10Y to order code

Order Code	ATSPM3/LED/DAW
Mode of operation	Maintained
DALI Interface	For Controlled Monitoring and Reporting
Emergency duration	3 hours
Input voltage	230/240V (207VAC - 264VAC) 50/60Hz
Power consumption	5.5VA, I _{nom} = 23mA (Full Battery)
Battery type	Rechargeable LiFePO4 Battery 3.2V 3.2Ah
Battery low voltage cut off	2.5V DC
Battery discharge current @ 3.2V DC	0.5A
Lamp	1W
Lamp colour	5700K
Viewing Distance	30m
Lamp Lifetime	L _{80 B50} 80000 Hours
Nominal lamp voltage	V _{rated} = 3V DC
Nominal lamp current	I _{rated} = 0.35A CC
Nominal lamp power	P _{rated} = 1W
Maximum output voltage with no lamp connected	U-OUT = 5V DC
Ingress protection	IP40
Cable entry	20mm on top and rear of product
Luminaire class	Class II
Product Weight	1.45Kg
Packaging Weight	0.22Kg
Standards	EN61347-2-7, EN61347-2-13, EN 60598-2-22, EN 55015
Environment	0°C to 45°C up to 80% relative humidity.

System	Order Code	Mode of Operation	Battery	Battery P/N	Viewing Distance	Dimensions (mm)					
						A	B	C	D	E	F
DALI Wireless	ATSPM3/LED/DAW	Maintained	LiFePO4 3.2V, 3.2Ah	70261	30 Metres	330	195	60	80	15	26
Alternative Systems Available: Specification sheets available upon request											
Standalone	ATSP2M3/LED	Maintained	LiFePO4 6.4V, 0.6Ah	70270	30 Metres	330	195	45	56.5	15	26
DALI	ATSP2M3/LED/DA	Maintained	LiFePO4 3.2V, 3.2Ah	70261	30 Metres	330	195	45	56.5	15	26
Self-Test	ATSP2M3/LED/ST	Maintained	LiFePO4 3.2V, 3.2Ah	70261	30 Metres	330	195	45	56.5	15	26

Available Accessories					
Order Code	Description	Material	Cutout (mm)	Dimensions(mm)	
AT/RK/DAW	Recessing Kit	ABS	370 x 80	390	100

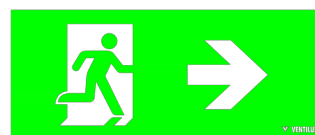
Included Legends



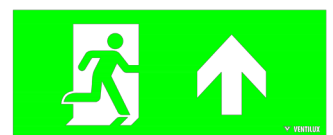
ISO 01



ISO 02



ISO 03



ISO 04